

Das entsprechende Copyright für jede Abbildung lautet © **VG Bild-Kunst, Bonn 2024**
The corresponding copyright for each image is © **VG Bild-Kunst, Bonn 2024**



Shimmering, 2024

Weighted aluminium platelet skirt, LEDS, Forex central stiffener, 3 phase motor, inverter, control system | Gewichteter Aluminiumplättche-Rock, LEDS, Forex-Zentralverstärker, Drehstrommotor, Wechselrichter, Steuerungssystem

Courtesy Liliane Lijn and Rodeo, London / Piraeus



The Beginning, 1959

Crayons and Ink on paper | Wachsmalkreide und Tinte auf Papier

Courtesy Liliane Lijn and Rodeo, London / Piraeus



Two Worlds, 1959

Ink on Paper Collage | Tinte auf Papiercollage

Courtesy Liliane Lijn and Rodeo, London / Piraeus



Colour Spheres, 1959

Gouache, collage, pen, ink | Gouache, Collage, Feder, Tinte

Courtesy Liliane Lijn and Rodeo, London / Piraeus



Dreamland, 1959

Crayons, gouache, ink on paper | Wachsmalkreide, Gouache, Tinte

Courtesy Liliane Lijn and Rodeo, London / Piraeus

HAS DER KUNST



Oneric Landscape, 1959

Crayons, gouache, ink on paper | Wachsmalkreide, Gouache, Tinte
Courtesy Liliane Lijn and Rodeo, London / Piraeus



Insect 1, 1959

Ink and gouache on paper | Tinte und Gouache auf Papier
Courtesy Liliane Lijn and Rodeo, London / Piraeus



Insect 2, 1959

Ink and gouache on paper | Tinte und Gouache auf Papier
Courtesy Liliane Lijn and Rodeo, London / Piraeus



Sky Scroll I, 1959

Crayons, gouache, ink on paper | Wachsmalkreide, Gouache, Tinte auf Papier
Courtesy Liliane Lijn and Rodeo, London / Piraeus



Sky Scroll II, 1959

Crayons, gouache, ink on paper | Wachsmalkreide, Gouache, Tinte auf Papier
Courtesy Liliane Lijn and Rodeo, London / Piraeus



Floating in Blood Heaven, 1960

Crayons, gouache, ink on paper | Wachsmalkreide, Gouache, Tinte auf Papier
Courtesy Liliane Lijn and Rodeo, London / Piraeus



Vibrographe, 1962/2019

Two metal drums, paper with printed bars, black box, motor, drums rotating in opposite directions | Zwei Metalltrommeln, Papier mit Balken bedruckt, schwarze Box, Motor, Trommeln drehen sich in entgegengesetzte Richtungen

Courtesy Liliane Lijn and Rodeo, London / Piraeus



Arise Alive, 1965

Letraset on painted truncated cork cone, motorized turntable | Letraset auf bemaltem abgeschnittenen Korkkegel, motorisierter Drehteller

Catherine Petitgas Collection



Act as Atom, 1966

Letraset on Perspex cone, motorised, VWTPVCDNG text by Liliane Lijn | Letraset auf Plexiglas-Kegel, motorisiert, VWTPVCDNG-Text von Liliane Lijn

Courtesy Liliane Lijn and Rodeo, London / Piraeus



E=MC3, 1968

Letraset on Perspex cone, motorised turntable, text collaboration between Liliane Lijn and Nazli Nour | Letraset auf Plexiglas-Kegel, motorisierter Drehteller, Text in Zusammenarbeit von Liliane Lijn und Nazli Nour

Courtesy Liliane Lijn and Rodeo, London / Piraeus

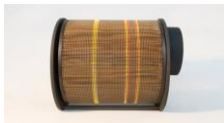
HAS DER KUNST



Reflection Tableau 4, 1962

Polymer spattered Perspex cylinder revolving on motor, aluminium frame, painted wood, glass box
| Polierter Plexiglas-Zylinder auf rotierenden Motor, Aluminiumrahmen, lackierter Holzrahmen,
Glasbox

Takis Foundation – Research Center for the Art & the Sciences



Saturn Two Line Drum, 1965

Painted metal mesh truck oil filter, Bakelite, brass rod, motor | Metallisches Gitter eines
Lastwagenölfilters, Bakelit, Messingstange, Motor

Courtesy Liliane Lijn and Rodeo, London / Piraeus



Red Tower, 1969

Crimson enameled copper wire wound acrylic cylinders on turntable | Karmesinroter emaillierter
Kupferdraht, gewundene Acrylzylinder auf Drehteller

Courtesy Liliane Lijn and Rodeo, London / Piraeus



Get Rid of Government Time, 1962

Letraset on painted steel drum, black wood and hardboard frame, motor | Letraset auf bemaltem
Stahltrommel, schwarzer Holz- und Hartfaserplattenrahmen, Motor

Stephen Weiss, London



Time Forces Split, 1965

Letraset on cylindrical oil filter, plastic, painted metal, motor | Letraset auf zylindrischem Ölfiler,
Kunststoff, lackiertes Metall, Motor

Catherine Petitgas Collection

HAS DER KUNST



Fidel Prism Poem Machine, 1965

Wood, paper, Letraset, Perspex, motor | Holz, Papier, Letraset, Plexiglas Motor
Courtesy Liliane Lijn and Rodeo, London / Piraeus



Highway Cones, 1966

Red and white and yellow and white painted cork cone | Roter-weiß und gelb-weiß bemalter Korkkegel

Courtesy Liliane Lijn and Rodeo, London / Piraeus



Double Water Koan, 1968

Perspex and water | Plexiglas und Wasser
Courtesy Liliane Lijn and Rodeo, London / Piraeus



Aluminium Koancuts, 1971

Solid machined aluminium | Massives bearbeitetes Aluminium
Courtesy Liliane Lijn and Rodeo, London / Piraeus



Mars Koan, 2008

Glass fibre, Polyester resin, intersected by three fluorescent Perspex ellipsoid discs, motorised turntable, central fluorescent tube | Glasfaser, Polyesterharz, durchschnitten von drei fluoreszierenden Plexiglas-Ellipsoid-Scheiben, motorisierter Drehteller, zentrale Leuchtstoffröhre
Courtesy Liliane Lijn and Rodeo, London / Piraeus



Three Line Koan, 2008

Glass fibre and Polyester resin cone intersected by three fluorescent Perspex ellipsoid discs, motorised turntable, central fluorescent tube | Glasfaser- und Polyesterharzkegel, durchzogen von drei fluoreszierenden Plexiglasellipsoidscheiben, motorisierter Drehteller, zentrale Leuchtstoffröhre

Courtesy Liliane Lijn and Rodeo, London / Piraeus



Lost Koan, 2007

Glass reinforced polyester, Perspex, motorised drive and fluorescent lights | Glasfaserverstärktes Polyester, Plexiglas motorisierter Antrieb und Leuchtstofflampen

Courtesy Liliane Lijn and Rodeo, London / Piraeus



Poemkoan=D=4=Open=Apollinaire, 1968

Perspex letters on fibreglass cone, motorized turntable, Text by Liliane Lijn | Plexiglas-Buchstaben auf einem Fiberglas-Kegel, motorisierter Drehteller, Text von Liliane Lijn

Courtesy Liliane Lijn and Rodeo, London / Piraeus



Way Out Is Way In, 2009

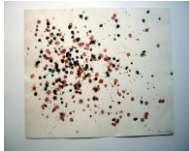
Painted steel solvent drums, 3 phase motor, inverter and programmed speed and direction control chip, halogen lighting | Angemalte Stahllösungstrommeln, 3-Phasen-Motor, Inverter und programmierter Geschwindigkeits- und Richtungssteuerchip, Halogenbeleuchtung

Courtesy Liliane Lijn and Rodeo, London / Piraeus



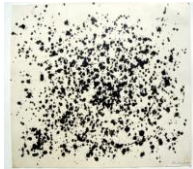
Fire Lines, 1960

Coloured teflon stick on Plexiglas | Farbiger Teflonstift auf Plexiglas
Courtesy Liliane Lijn and Rodeo, London / Piraeus



Fire Drawings: Starspace 1, 1959

Teflon stick on paper | Teflon-Stift auf Papier
Courtesy Liliane Lijn and Rodeo, London / Piraeus



Fire Drawings: Starspace 2, 1959

Teflon stick on paper | Teflon-Stift auf Papier
Courtesy Liliane Lijn and Rodeo, London / Piraeus



Fire Drawings: Starspace 3, 1959

Teflon stick on paper | Teflon-Stift auf Papier
Courtesy Liliane Lijn and Rodeo, London / Piraeus



Fire Drawings: Starspace 4, 1959

Teflon stick on paper | Teflon-Stift auf Papier
Courtesy Liliane Lijn and Rodeo, London / Piraeus



Fire Drawings: Starspace 5, 1959

Teflon stick on paper | Teflon-Stift auf Papier
Courtesy Liliane Lijn and Rodeo, London / Piraeus



Fire Drawings: Starspace 6, 1959
Teflon stick on paper | Teflon-Stift auf Papier
Courtesy Liliane Lijn and Rodeo, London / Piraeus



Fire Drawings: Starspace 7, 1959
Teflon stick on paper | Teflon-Stift auf Papier
Courtesy Liliane Lijn and Rodeo, London / Piraeus



Fire Drawings: Starspace 8, 1959
Teflon stick on paper | Teflon-Stift auf Papier
Courtesy Liliane Lijn and Rodeo, London / Piraeus



Double Drilling, 1961
Drilled and painted Perspex, wooden frame | Gebohrtes und bemaltes Plexiglas in Holzrahmen
Courtesy Liliane Lijn and Rodeo, London / Piraeus



Inner Space, 1961
Drilled, acid etched, painted Perspex | Gebohrtes, säuregeätztes, bemaltes Plexiglas
Courtesy Liliane Lijn and Rodeo, London / Piraeus

HAS DER KUNST



Yellow Drilling, 1961

Drilled Perspex, acid, wooden frame, white paint | Gebohrtes Plexiglas, geätzt, Holzrahmen, weiße Farbe

Courtesy Liliane Lijn and Rodeo, London / Piraeus



Cutting, 1962

Sawn and painted Perspex | Gesägtes und bemaltes Plexiglas
Takis Foundation – Research Center for the Art & the Sciences



Cuttings, 1961

Sawn cut Perspex, white paint | Gesägtes Plexiglas, weiße Farbe
Courtesy Liliane Lijn and Rodeo, London / Piraeus



Cutting, 1961

Sawn cut Perspex, white paint | Gesägtes Plexiglas, weiße Farbe
Takis Foundation – Research Center for the Art & the Sciences



Flow Lines, 1976

Pencil on paper | Bleistift auf Papier
Courtesy Liliane Lijn and Rodeo, London / Piraeus

HAS DER KUNST



Brush Lines, 1976
Ink on paper | Tinte auf Papier
Courtesy Liliane Lijn and Rodeo, London / Piraeus



Brush Lines, 1976
Ink on paper | Tinte auf Papier
Courtesy Liliane Lijn and Rodeo, London / Piraeus



Flow Lines, 1976
Ink on paper | Tinte auf Papier
Courtesy Liliane Lijn and Rodeo, London / Piraeus



Flow Lines, 1976
Ink on paper | Tinte auf Papier
Courtesy Liliane Lijn and Rodeo, London / Piraeus



Brush Lines III, 1976
Ink on paper | Tinte auf Papier
Courtesy Liliane Lijn and Rodeo, London / Piraeus



Brush Lines II, 1976
Ink on paper | Tinte auf Papier
Courtesy Liliane Lijn and Rodeo, London / Piraeus



Flow Lines, 1976
Ink on paper | Tinte auf Papier
Courtesy Liliane Lijn and Rodeo, London / Piraeus



Brush Lines, 1978
Ink on paper | Tinte auf Papier
Courtesy Liliane Lijn and Rodeo, London / Piraeus



Brush Lines, 1978
Ink on paper | Tinte auf Papier
Courtesy Liliane Lijn and Rodeo, London / Piraeus



Windows (Starskins), 1980
Soft pastel on hand pressed paper | Pastellkreide auf handgeschöpftem Papier
Courtesy of Nicoletta Fiorucci Collection

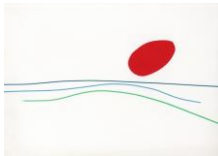
HAS DER KUNST



Forcefields, 1970
Letrafilm on paper | Letrafilm auf Papier
Courtesy Liliane Lijn and Rodeo, London / Piraeus



Forcefields, 1970
Letrafilm on paper | Letrafilm auf Papier
Courtesy Liliane Lijn and Rodeo, London / Piraeus



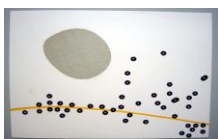
Forcefields, 1970
Letrafilm on paper | Letrafilm auf Papier
Courtesy Liliane Lijn and Rodeo, London / Piraeus



Forcefields, 1970
Letrafilm on paper | Letrafilm auf Papier
Courtesy Liliane Lijn and Rodeo, London / Piraeus



Forcefields, 1970
Letrafilm on paper | Letrafilm auf Papier
Courtesy Liliane Lijn and Rodeo, London / Piraeus



Forcefields, 1970
Letrafilm on paper | Letrafilm auf Papier
Courtesy Liliane Lijn and Rodeo, London / Piraeus

HAS DER KUNST



Forcefields 3, 1969
Letrafilm on paper | Letrafilm auf Papier
B Weiss-Lijn



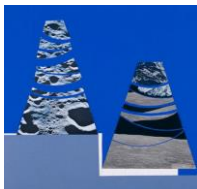
Inner Space Outer Space 1, 1969
Collage | Collage
Stephen Weiss, London



Inner Space Outer Space 2, 1969
Collage | Collage
Stephen Weiss, London

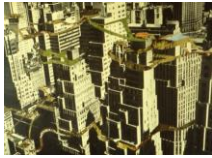


Inner Space Outer Space 3, 1969
Collage | Collage
Stephen Weiss, London



Inner Space Outer Space, 1969
Collage | Collage
Stephen Weiss, London

HAS DER KUNST



Floating Gardens of Rock City, 1970
Collage | Collage
Courtesy Liliane Lijn and Rodeo, London / Piraeus



Terraced Gardens of Rock City, 1970
Collage | Collage
Courtesy Liliane Lijn and Rodeo, London / Piraeus



Floating Gardens of Rock City, 1970
Printed reproduction of collage | Gedruckte Reproduktion einer Collage
Private Collection



Hanging Gardens of Rock City, 1970
Printed reproduction of collage | Gedruckte Reproduktion einer Collage
British Museum



Untitled, 1967
Letraset electronic symbols on card | Elektronische Symbole aus Letraset auf Karton
Courtesy Liliane Lijn and Rodeo, London / Piraeus



Electronic Symbols, 1968
Letraset electronic symbols on card | Elektronische Symbole aus Letraset auf Karton
Courtesy Liliane Lijn and Rodeo, London / Piraeus



Electronic Symbols, 1968

Letraset electronic symbols on card | Elektronische Symbole aus Letraset auf Karton
Courtesy Liliane Lijn and Rodeo, London / Piraeus



Electronic Symbols, 1969

Letraset electronic symbols on card | Elektronische Symbole aus Letraset auf Karton
Courtesy Liliane Lijn and Rodeo, London / Piraeus



Electronic Symbols, 1969

Letraset electronic symbols on card | Elektronische Symbole aus Letraset auf Karton
Courtesy Liliane Lijn and Rodeo, London / Piraeus



OOOP, 1969

Letraset electronic symbols on card | Elektronische Symbole aus Letraset auf Karton
Courtesy Liliane Lijn and Rodeo, London / Piraeus



Electronic Symbols, 1969

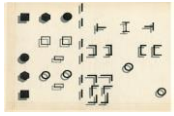
Letraset electronic symbols on card | Elektronische Symbole aus Letraset auf Karton
Courtesy Liliane Lijn and Rodeo, London / Piraeus



Electronic Symbol: Blue Arrows, 1966/1969

Letraset electronic symbols on card | Elektronische Symbole aus Letraset auf Karton
Courtesy Liliane Lijn and Rodeo, London / Piraeus

HAS DER KUNST



Material Alphabet, 1970

Ink on tracing paper, dieline on paper | Tinte auf Transparentpapier, Dieline auf Papier
Courtesy Liliane Lijn and Rodeo, London / Piraeus



Material Alphabet, 1979

Ink on tracing paper, dieline on paper | Tinte auf Transparentpapier, Dieline auf Papier
Courtesy Liliane Lijn and Rodeo, London / Piraeus



Material Alphabet, 1970

Dieline on paper | Dieline auf Papier
Courtesy Liliane Lijn and Rodeo, London / Piraeus



Tree of Truth, 1971

Letrafilm and Letraset electronic symbols on paper | Elektronische Symbole aus Letrafilm und Letraset auf Karton
Courtesy Liliane Lijn and Rodeo, London / Piraeus



Tension, 1971

Letrafilm and Letraset electronic symbols on card | Elektronische Symbole aus Letrafilm und Letraset auf Karton
Courtesy Liliane Lijn and Rodeo, London / Piraeus



Paranoia, 1971

Letrafilm and Letraset electronic symbols on card | Elektronische Symbole aus Letrafilm und Letraset auf Karton
Courtesy Liliane Lijn and Rodeo, London / Piraeus

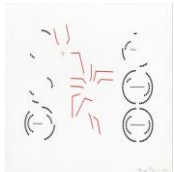
HAS DER KUNST



Neurogramme I, 1971

Letrafilm and Letraset electronic symbols on card | Elektronische Symbole aus Letrafilm und Letraset auf Karton

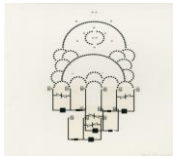
Courtesy Liliane Lijn and Rodeo, London / Piraeus



Neurogramme II, 1971

Letrafilm and Letraset electronic symbols on card | Elektronische Symbole aus Letrafilm und Letraset auf Karton

Courtesy Liliane Lijn and Rodeo, London / Piraeus



Mind Home, 1971

Letrafilm and Letraset electronic symbols on card | Elektronische Symbole aus Letrafilm und Letraset auf Karton

Courtesy Liliane Lijn and Rodeo, London / Piraeus



Dream Machine, 1971

Letrafilm and Letraset electronic symbols on card | Elektronische Symbole aus Letrafilm und Letraset auf Karton

Courtesy Liliane Lijn and Rodeo, London / Piraeus



Neurogramme III, 1971

Letrafilm and Letraset electronic symbols on card | Elektronische Symbole aus Letrafilm und Letraset auf Karton

Courtesy Liliane Lijn and Rodeo, London / Piraeus

HAS DER KUNST



Electronic Goddess, 1971

Letrafilm and Letraset electronic symbols on card | Elektronische Symbole aus Letrafilm und Letraset auf Karton

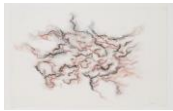
Courtesy Liliane Lijn and Rodeo, London / Piraeus



Dream Robots, 1971

Letrafilm and Letraset electronic symbols on card | Elektronische Symbole aus Letrafilm und Letraset auf Karton

Courtesy Liliane Lijn and Rodeo, London / Piraeus



Lunar Traces, 1978

Conté crayons on paper | Conté-Kreiden auf Papier

Courtesy Liliane Lijn and Rodeo, London / Piraeus



Lunar Traces, 1978

Conté crayons on paper | Conté-Kreiden auf Papier

Courtesy Liliane Lijn and Rodeo, London / Piraeus



Lunar Traces, 1978

Conté crayons on paper | Conté-Kreiden auf Papier

Courtesy Liliane Lijn and Rodeo, London / Piraeus



Lunar Traces, 1978

Conté crayons on paper | Conté-Kreiden auf Papier

Courtesy Liliane Lijn and Rodeo, London / Piraeus

HAS DER KUNST



Lunar Traces, 1978
Conté crayons on paper | Conté-Kreiden auf Papier
Courtesy Liliane Lijn and Rodeo, London / Piraeus



Lunar Traces, 1978
Conté crayons on paper | Conté-Kreiden auf Papier
Courtesy Liliane Lijn and Rodeo, London / Piraeus



Radiation Tableau, 1962
Polymer on Perspex cylinders, wood structure, oil painted canvas, electric motors | Polymer auf Plexiglas-Zylindern, Holzstruktur, ölbespannte Leinwand, Elektromotoren
Takis Foundation – Research Center for the Art & the Sciences



Cosmic Flares I (vertical), 1965
Polymer lenses on Perspex in painted wood frame, lights and motorised switching mechanism | Polymerlinsen auf Plexiglas in einem bemalten Holzrahmen, mit Lichtern und motorisiertem Schaltmechanismus
Courtesy Liliane Lijn and Rodeo, London / Piraeus



Cosmic Flares II, 1966
Polymer on Perspex in painted metal frame, light and detachable programmed digital switching controller | Polymer auf Plexiglas in einem bemalten Metallrahmen, mit Licht und abnehmbarem programmierbarem digitalen Schaltcontroller
Courtesy Liliane Lijn and Rodeo, London / Piraeus



Echolights, 1963

Perspex block, acrylic polymer, projector with rotating lens | Plexiglasblock, Acrylpolymer,
Projektor mit rotierender Linse
Courtesy Liliane Lijn and Rodeo, London / Piraeus



In the Valley of Darkness, 1973

Stove-enamelled black aluminium base, chemi-blackened steel and optical glass prisms | Ofen-
emaillierter schwarzer Aluminiumsockel, chemisch geschwärztes Stahl und optische Glasprismen
Courtesy Liliane Lijn and Rodeo, London / Piraeus



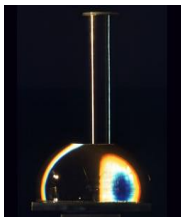
No Other, 1976

Anodised aluminium and optical glass prisms | Eloxiertes Aluminium und optische Glasprismen
Courtesy Liliane Lijn and Rodeo, London / Piraeus



Four Figures of Light, 1978

Chromed spring steel, chromed perforated steel, circular steel base, aluminium angles, steel
blocks, and optical glass periscope prisms | Verchromter Federstahl, verchromter perforierter
Stahl, kreisförmiger Stahlsockel, Aluminiumwinkel, Stahlblöcke und optische Glasperiskoprismen
Courtesy Liliane Lijn and Rodeo, London / Piraeus



Denslens, 1974 – 75

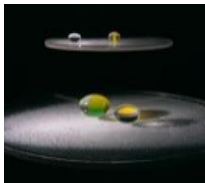
Nickel wire, rotating Perspex cylinder, turntable, satin-chromed steel, hemispherical glass lens |
Nickel-Draht, rotierender Perspex-Zylinder, Drehteller, satiniert verchromter Stahl,
halbkugelförmige Glaslinse
Courtesy Liliane Lijn and Rodeo, London / Piraeus

HAS DER KUNST



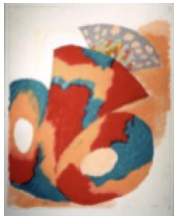
Liquid Reflections / Series 2 (48\"/>

Acrylic drum containing water, turntable and projector lamp, acrylic balls | Acryltrommel mit Wasser, Drehscheibe und Projektorlampe, Acrylkugeln
Courtesy Liliane Lijn and Rodeo, London / Piraeus



Liquid Reflections / Series 2 (40\"/>

Acrylic drum containing water, turntable and projector lamp, acrylic balls | Acryltrommel mit Wasser, Drehscheibe und Projektorlampe, Acrylkugeln
Courtesy Liliane Lijn and Rodeo, London / Piraeus



She, 1984

Oil pastel on paper | Ölpastellkreide auf Papier
Courtesy Liliane Lijn and Rodeo, London / Piraeus



She, 1985

Oil pastel on paper | Ölpastellkreide auf Papier
Courtesy of Nicoletta Fiorucci Collection



Goddess, 1985

Oil pastel on paper | Ölpastellkreide auf Papier
Courtesy Liliane Lijn and Rodeo, London / Piraeus

HAS DER KUNST



Flying She, 1984

Ink and self-adhesive velvet on paper | Tinte und selbstklebender Samt auf Papier
Courtesy Liliane Lijn and Rodeo, London / Piraeus



Winged She, 1984

Oil pastel on paper | Ölpastellkreide auf Papier
Courtesy Liliane Lijn and Rodeo, London / Piraeus



Rubber She, 1984

Oil pastel on paper | Ölpastellkreide auf Papier
Courtesy Liliane Lijn and Rodeo, London / Piraeus



Lady of Light, 1984

Oil pastel on paper | Ölpastellkreide auf Papier
Courtesy Liliane Lijn and Rodeo, London / Piraeus



Net Head, 1986

Oil pastel on paper | Ölpastellkreide auf Papier
Courtesy Liliane Lijn and Rodeo, London / Piraeus

HAS DER KUNST



Net Head, 1986
Oil pastel on paper | Ölpastellkreide auf Papier
Courtesy Liliane Lijn and Rodeo, London / Piraeus



Net Head, 1986
Oil pastel on paper | Ölpastellkreide auf Papier
Courtesy Liliane Lijn and Rodeo, London / Piraeus



Net Head, 1986
Oil pastel on paper | Ölpastellkreide auf Papier
Courtesy Liliane Lijn and Rodeo, London / Piraeus



Net Head, 1986
Oil pastel on paper | Ölpastellkreide auf Papier
Courtesy Liliane Lijn and Rodeo, London / Piraeus



Net Head, 1986
Oil pastel on paper | Ölpastellkreide auf Papier
Courtesy Liliane Lijn and Rodeo, London / Piraeus

HAS DER KUNST



Net Head, 1986
Oil pastel on paper | Ölpastellkreide auf Papier
Courtesy Liliane Lijn and Rodeo, London / Piraeus



Net Head, 1986
Oil pastel on paper | Ölpastellkreide auf Papier
Courtesy Liliane Lijn and Rodeo, London / Piraeus



Torn Head, 1985
Soft pastel on paper | Pastellkreide auf Papier
Courtesy Liliane Lijn and Rodeo, London / Piraeus



Armoured Head, 1990
Zinc blown glass and metal | Zink, mundgeblasenes Glas und Metall
Tate: Purchased with funds provided by the Denise Coates Foundation on the occasion of the 2018 centenary of women gaining the right to vote in Britain 2019



Headborn, 1987 – 1990
Glass, bronze and leather | Glas, Bronze und Leder
Tate: Purchased with funds provided by the Denise Coates Foundation on the occasion of the 2018 centenary of women gaining the right to vote in Britain 2019



Herself, 1987/1990

Blown glass, ostrich feathers, bronze, slate | Mundgeblasenes Glas, Straußenfedern, Bronze, Schiefer

Courtesy Liliane Lijn and Rodeo, London / Piraeus



Bridal Wound, 1986 – 1990

Glass, ostrich feathers, felt and marble | Glas, Straußenfedern, Filz und Marmor

Tate: Purchased with funds provided by the Denise Coates Foundation on the occasion of the 2018 centenary of women gaining the right to vote in Britain 2019



Brooding Head, 1986/1990

Etched blown glass, patinated bronze, feathers | Graviertes mundgeblasenes Glas, patinierte Bronze, Federn

Private Collection, London



Moonbrow, 1978

Cornish stone, glass prisms | Kornischer Stein, Glasprismen

Courtesy Liliane Lijn and Rodeo, London / Piraeus



Kori, 1978

Cornish stone, optical | Kornischer Stein, Glasprismen

Courtesy Liliane Lijn and Rodeo, London / Piraeus



Saurian, 1978

Lake District stone optical glass prisms | Steine aus dem Lake District, optische Glasprismen

Courtesy Liliane Lijn and Rodeo, London / Piraeus

HAS DER KUNST



Woman of War, 1988/1989
Acrylic on paper | Acryl auf Papier
Courtesy Liliane Lijn and Rodeo, London / Piraeus



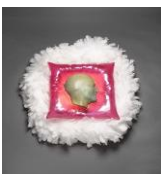
Lady of Stormsea, 1989
Oil stick on paper | Ölkreide auf Papier
Courtesy Liliane Lijn and Rodeo, London / Piraeus



Earth Medusa, 1986
Soft pastel on paper | Pastellkreide auf Papier
Stephen Weiss, London



Flower Bride, 1987
Soft pastel on paper | Pastellkreide auf Papier
Courtesy Liliane Lijn and Rodeo, London / Piraeus



Sweet Solar Dreams, 2002 – 2022
One part of an installation: Perspex, led rope, lighting, feathered boa, pink hollow resin cushion, bronze cast of | Teil einer Installation: Plexiglas, LED-Seil, Beleuchtung, Federboa, pinkes Kunstharzkissen, Bronzeguss des Kopfes des Künstlerin, Ton (02:00 Min. im Loop)
Courtesy Liliane Lijn and Rodeo, London / Piraeus



Waveguide, 1977 – 1978

15 aluminum tubes wound with copper wire, steel | 15 Aluminiumrohre, gewickelt mit Kupferdraht, Stahl
Linear



Cosmic Wings, 1986

12 Watercolours | 12 Aquarelle
Courtesy Liliane Lijn and Rodeo, London / Piraeus



Study for Woman of War VII, 1986

Gouache on paper | Gouache auf Papier
Private Collection



Study for Woman of War V, 1984

Ink and watercolour on paper | Tinte und Aquarell auf Papier
Courtesy Liliane Lijn and Rodeo, London / Piraeus



Study for Woman of War III, 1984

Oil pastels, ink, self-adhesive velvet and mirror on paper | Ölpastelle, Tinte, selbstklebendes Samt und Spiegel auf Papier
Courtesy Liliane Lijn and Rodeo, London / Piraeus



Study for Woman of War I, 1984
Ink and watercolour on paper | Tinte und Aquarell auf Papier
Courtesy Liliane Lijn and Rodeo, London / Piraeus



tree of truth, 1984
Ink on paper | Tinte auf Papier
Courtesy Liliane Lijn and Rodeo, London / Piraeus



Transformation of the Bride into the Medusa, 1987
Water colour and oil pastel on paper | Aquarell und Ölpastellkreide auf Papier
Courtesy Liliane Lijn and Rodeo, London / Piraeus



Good Mother Bad Mother, 1989
Oil stick on paper | Ölkreide auf Papier
Courtesy Liliane Lijn and Rodeo, London / Piraeus

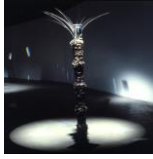


Linear Light Column, 1969
Enamelled copper wire wound on perforated steel cylinder with motorised turntable | Emaille-
beschichteter Kupferdraht gewickelt auf einem perforierten Stahlzylinder mit motorisiertem
Drehteller
Courtesy Liliane Lijn and Rodeo, London / Piraeus



Linear Light Column, 1969
Copper wound perforated steel, turntable, and chrome, polished solid steel base |
Kupfergewickelter perforierter Stahl, Drehteller und verchromte, polierte massive Stahlbasis
Courtesy Liliane Lijn and Rodeo, London / Piraeus

HAS DER KUNST



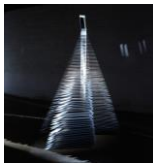
Feathered Lady, 1979

Anodised aluminium angle, feather dusters, piano wire, glass beads, optical glass prism | Eloxiertes Aluminiumwinkel, Federwedel, Klavierdraht, Glasperlen, optisches Glasprisma
Courtesy Liliane Lijn and Rodeo, London / Piraeus



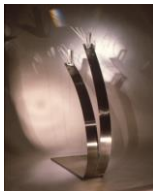
Heshe, 1980

Chromed steel, synthetic fibres, optical glass prism | Verchromter Stahl, synthetische Fasern, optisches Glasprisma
Collezione D'Orio



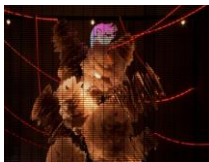
Queen of Hearts, Queen of Diamonds, 1980

Optical glass prism, aluminium | Optisches Glasprisma, Aluminium
Courtesy Liliane Lijn and Rodeo, London / Piraeus



Gemini, 1984

Stainless steel, optical glass prism, piano wire, glass beads, chromed steel springs | Edelstahl, optisches Glasprisma, Klavierdraht, Glasperlen, verchromte Stahlfedern
Courtesy Liliane Lijn and Rodeo, London / Piraeus



Electric Bride, 1989

Aluminium, steel, cock feathers, Elmflex micanite, brass, blown glass | Aluminium, Stahl, Hahnenfedern, Elmflex-Micanite, Messing, mundgeblasenes Glas
Courtesy Liliane Lijn and Rodeo, London / Piraeus

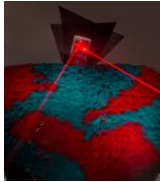
HAS DER KUNST



Conjunction of Opposites: Woman of War, 1986

Painted steel and aluminium, synthetic fibres, glass prism, aluminium mesh, audio system, 5 milliwatt helium laser, smoke machine, computer | Bemalter Stahl und Aluminium, synthetische Fasern, Glasprisma, Aluminiumnetz, Audiosystem, 5 Milliwatt Heliumlaser, Nebelmaschine, Computer

Courtesy Liliane Lijn and Rodeo, London / Piraeus



Conjunction of Opposites: Lady of the Wild Things, 1983

Painted steel, glass prism, aluminum mesh, synthetic fibres, LEDs, electronic sound to light system | Bemalter Stahl, Glasprisma, Aluminiumnetz, synthetische Fasern, LEDs, elektronisches Sound-to-Light-System

Courtesy Liliane Lijn and Rodeo, London / Piraeus